

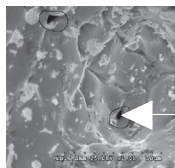
# EXIDE

## **EL PLUS** PREMIUM TUBULAR

**5**  
year  
warranty

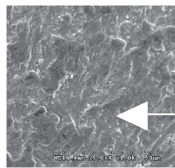


**The Ultimate  
UPS Battery**



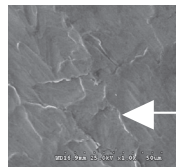
Big voids  
Non uniform  
micro  
hardness

Gravity Casting



Small  
voids  
Very low  
micro  
hardness

Low Pressure  
Casting 10 Bar



No voids  
Uniform  
micro  
hardness

High Pressure  
Casting 150 Bar HADI

The new EL+ range are manufactured as per Exide's proprietary Törr Tubular technology using one of the world's most exclusive, advanced and state-of-the-art 'HADI' high pressure spine casting (at 100 bar) machines, which is not commonly available. With our hi-tech R&D center at Kolkata, Exide has developed the high-corrosion resistant and robust spine technology using the HADI process, which ensures a super fine grain structure, for strength, long life and highest reliability. It is also cadmium free.

## Applications

• UPS System • Telecommunication Systems • Office Automation Equipment • Fire Alarm & Security Systems • Electronic PABX Systems • Cable Television Equipment • Electronic Attendance & Cash Registers • Process Instrumentation & Control • Railway Signalling • Power Plants & Substations • Cellular Phones (Base Stations & Transmitters) • Geophysical Equipment • PCO Monitors (Electronic)

## EXIDE EL+ RANGE OF TUBULAR MONOBLOC BATTERIES

5 YEARS WARRANTY PRODUCT													
Battery Type	Nominal Monoblock unit Voltage (V)	Capacity (AH)		Charging Current for Initial Charging Amp		Filled Battery Weight (KG)	Approx. Acid Qty. @1,240 Sp. Gr.	Maximum Overall Dimensions (MM)			Constant Potential limiting Current (Amp)	Trickle Charge Current (mA)	
		10HR 1.75V /Cell	10HR 1.80V/Cell (Confirms to BIS 13369)	Starting 2.35V/- Cell	Finishing 2.75 V/Cell			±5%	Litre/Battery	L		W	H
6EL40+	12V	40	38	5.0	2.5	28.60	10.08	408	174	281	10.00	40	160
6EL50+	12V	50	47	6.0	3.0	30.80	8.87	408	174	281	12.50	50	200
6EL66+	12V	66	63	8.0	4.0	43.12	15.33	531	220	281	16.50	70	280
6EL80+	12V	80	76	9.6	5.0	46.80	15.56	531	220	281	20.00	80	320
6EL100+	12V	100	95	12.0	6.0	55.20	22.17	500	187	421	25.00	100	400
6EL130+	12V	130	123	16.0	8.0	65.50	20.64	500	187	421	32.50	130	520
6EL150+	12V	150	142	18.0	9.0	71.70	20.60	500	187	421	37.50	150	600
6EL180+	12V	180	171	22.0	11.0	72.40	22.00	500	187	421	45.00	180	720

### Operational Settings :

For constant potential charging - Boost Voltage (max) : 2.40 Volts per cell, Float Voltage: 2.25 Volts per cell  
Limit charging current (A) : 10-20% of C<sub>10</sub> capacity

### Equalizing Charge :

An equalizing charge is a special charge given when non-uniformity in voltage/Sp. Gr. has developed between batteries. It is given to restore all batteries to a fully charged condition. Equalize charge should be done in every 6 months at the rate 3 to 4% constant current of C<sub>10</sub> capacity upto TOC voltage (@2.65 vpc) for 6 hours.

### Statutory Notice:

All batteries contain lead, which is harmful for humans and environment. As per statutory requirements, the used battery must be returned to the authorized dealer, manufacturer or at the designated collection centres.

### The benefits derived are as follows:

1. The designed float life of Exide EL+ extends well beyond 5 years and on an average 8 – 10 years for EL+ Range.
2. The cyclic life of EL+ is also very high to the tune of 1500 cycles at 80% depth of discharge.
3. The low antimony content of the spines ensures a very low self discharge loss of the order of 1% of the 10 hour rate capacity per week at 25°C.
4. The combination of low antimony alloy and ceramic vent plug keeps the water addition requirement very low. A topping up frequency of once in 6-9 months can easily be achieved in normal operating conditions.

# EXIDE

Head Office:

Kolkata 'Exide House', 59E Chowringhee Road, Kolkata - 700 020, Phone (033) 2283 2120/33/36/50/51/71/ 2238/39, Fax (033) 2283 2632/37

Corporate Marketing Office:

Kolkata 6A Hatibagan Road, Entally, Kolkata - 700 014, Phone (033) 01149541640, Fax (033) 2286 6186, E-mail: indlcare@exide.co.in

Regional Offices:

New Delhi: 'Exide House', 8/42 Kirtinagar Industrial Area, Opposite MDH Spice Factory, New Delhi - 110015, Phone: (011) 49541640

Chennai: Exide Industries Limited, New No. 824/2, Old No. 398, Third Floor, Anna Salai, Nandanam, Chennai - 600 035 (Before Hyundai Showroom), Phone (044) 23747900/914, Fax (044) 4907 5126

Mumbai: 'RAHEJAS', 5th Floor, 8C Main Avenue, V P Road, Santacruz (West), Mumbai - 400 054, Phone (022) 2646 5283/84, Fax (022) 2646 5042

Kolkata: 6A Hatibagan Road, Entally, Kolkata - 700 014, Phone (033) 2286 6158/6159, Fax (033) 23023600/22866158/59/93, E-mail: indlcare@exide.co.in

This catalogue is issued to provide outline information only and is not deemed to form part of an offer or contract. Our policy is one of continued improvement and we reserve the right to change details without prior notice.

E-mail: [indlcare@exide.co.in](mailto:indlcare@exide.co.in), Visit us at [www.exideindustries.com](http://www.exideindustries.com) | Toll Free No. 1800-103-5454

PHX/EL /05-2022